

THE BLANKET FORT CLUB

SOLD OUT
SHOWS AT
CAST AND
RIVELINCO!



THE QUEST FORT STARRY NIGHT FLURRY
A SENSORY IMMERSIVE ADVENTURE
FOR ALL CHILDREN

**AVAILABLE FOR
TOURING FROM
OCTOBER 2024**

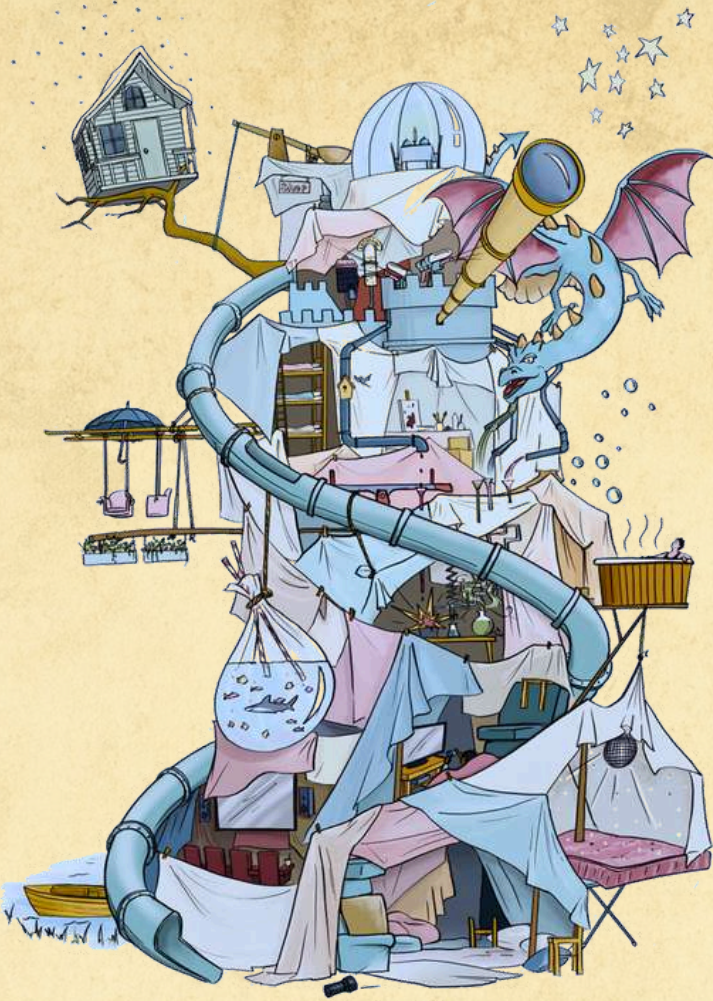


ARTS COUNCIL
ENGLAND

LOTTERY FUNDED

Supported using public funding by
**ARTS COUNCIL
ENGLAND**

THE BLANKET FORT CLUB



WATCH VIDEO

THE BLANKET FORT CLUB IS A WONDEROUS PLACE WHERE THE POSSIBILITIES OF INVENTION ARE LIMITED ONLY BY THE IMAGINATION.

The Starry Night Flurry, a once in a lifetime celestial event, is about to take place and our treasured Blanket Fort Club members are invited to join Snow, Ice and Wind for the celebrations. But with Snow and Ice falling out and Wind blowing in a strange change, will we be able to get to the observatory in time? An unforgettable adventure exploring infinite love, resilience and the joy in a moment shared.

What is it: A 60 minutes sensory immersive theatre experience with character 'hosts' guiding us through tactile spaces in a living, breathing, sonic blanket fort! Discover The Three Little Pigs in The Story Room, splash through the puddles in the rain corridor, construct a castle in the building room. Once you have journeyed through the blanket fort, all you'll need is a sheet and your imagination to find your way back to us.

Who is it for: The Blanket Fort Club is ideal for young children aged 5-10 and all children who would encounter barriers to access in traditional theatre experiences including children with complex needs and disabilities and Profound Multiple Learning Disabilities (PMLD). Perfect for a school trip or an experience shared with parents, carers and friends.



Design for The Three Little Pigs (Huffington Wolf Hardware) by Irene Jade

CREATIVE ACCESS

CREATIVE ACCESS AND INCLUSION SITS AT THE VERY HEART OF WHAT WE DO, FROM THE VERY INCEPTION OF OUR STORYTELLING .

The Blanket Fort Club has a broad appeal, offering a cosy sanctuary for some and an endlessly playful and absorbing activity for others, smashing down barriers to access, embedding:

- Makaton and audio description throughout
- An integrated BSL track
- Familiarisation/Touch Tours
- Digital Support Aids/enrichment
- Close up and responsive sensory storytelling
- Interactive character guides
- Supportive audio/visual transition cues
- Experiential 'Sensory Maps'
- An immersive tactile set designed to be accessible for those with mobility impairments.

FEEDBACK



'That was the best thing I've ever seen!'
HAF participant of the BFC experience

The Blanket Fort Club uses innovative 'sensory maps' to engage audience participants in an immersive journey, exploring story and theme through tactile spaces with their character guide. Some maps are more quest-based than others.



Transitions from spaces to space are part of the magical experience, with the blanket fort inviting us through intriguing light, sound and tactile elements.

At brief times, The maps weave together, celebrating connections and enriching concepts around the beauty of transient moments.



PARTNERSHIP RESIDENCIES

WE'RE KEEN TO PARTNER WITH ORGANISATIONS TO SHAPE RESPONSIVE BLANKET FORT CLUB RESIDENCIES, OFFERING AN ACCESSIBLE & INCLUSIVE PROGRAMME OF SENSORY IMMERSIVE THEATRE EXPERIENCE, CO-CREATIONAL ENGAGEMENT & WRAPAROUND ENRICHMENT.

Our immersive and tactile set has been designed to be accessible for those with mobility impairments. It extends to 9.8m wide x 10.2m deep with the highest point being 3.4m and reduce to suit smaller spaces.

The visiting team consists of three performers, one facilitator and a Production Manager. We require one member of Front of House.

Get in 4 hours. Get out 90 minutes.

'Magic, dreamy possible...Amazing immersive show. Perfect!'
Audience participant, Cast.



The experience lasts an hour in total and we can perform up to three times a the day.

Sound, lighting and projection-We tour with our own sound and lighting systems, all we require is sufficient power supply. A plan is shared with the venue in advance of our arrival.

Marketing and Box Office-We support with print, social media content and digital aids/enrichment for audience participants.

Capacity is dependant on the participating audience and their access requirements. We can accommodate up to 40 people in the immersive set.



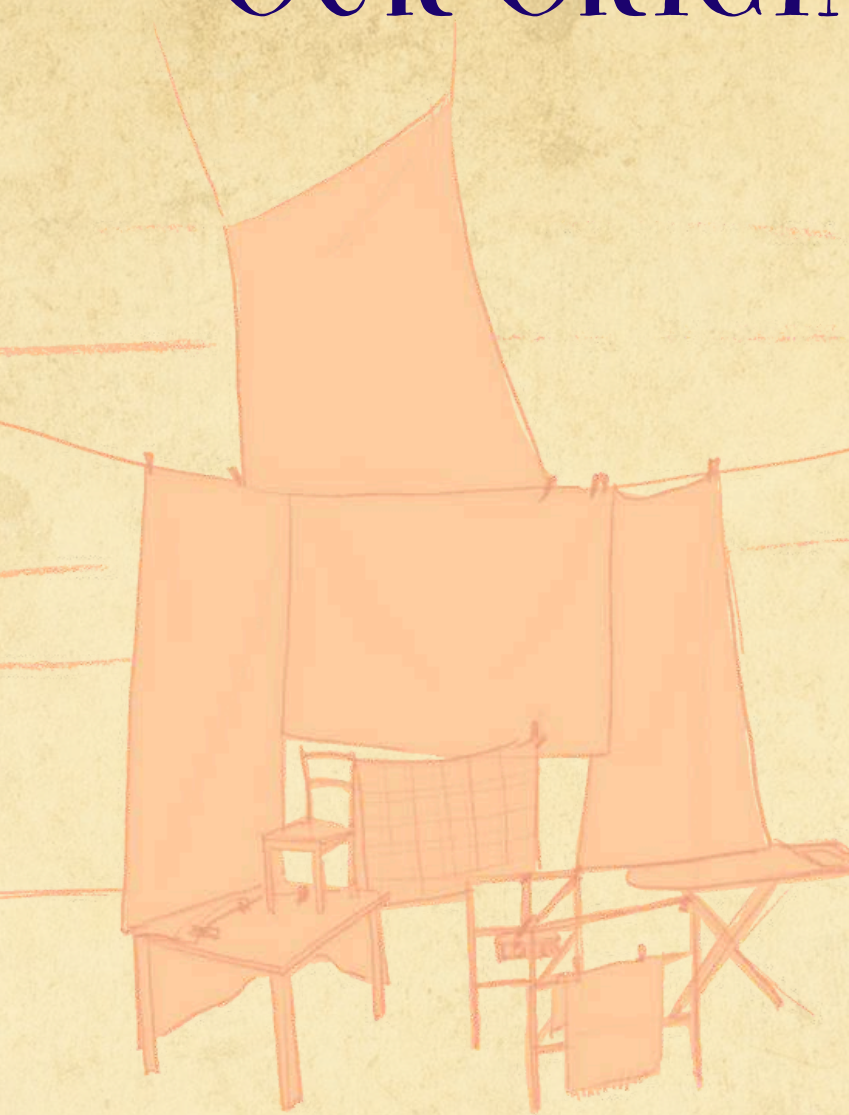
GALLERY

CREATIVE LEARNING

We offer accessible Blanket Fort Building Storytelling workshops and projects for schools and family groups. We can also provide sensory play CPD . [Click for info.](#)

OUR ORIGIN STORY

IN 2020, DURING THE LOCKDOWN, I SPENT WHOLE AFTERNOONS BUILDING WORLDS OUT OF HOUSEHOLD ITEMS AND FURNITURE WITH MY SON, WHO IS AUTISTIC, AND HAS LEARNING DISABILITIES, AND HIS YOUNGER SISTER.



In this cosy hub we could tell stories, imagine up adventures, share our dreams and secrets; we were a club. And when something fell down, we made it new, and when it was time to eat, we borrowed back a chair or two to sit down and have our meal together.



We went on, eager to grow our world and play within it, knowing we might also need to perhaps put it all away some day. We learnt to love that part of our blanket fort club too.



The Blanket Fort Club is that love realised as a sensory immersive theatre experience for young children aged 5-8, children with complex needs and disabilities and profound, multiple learning disabilities (PMLD).

***'It made me so happy because I went on a magic adventure'.
HAF participant of the BFC experience***

THE TEAM

George Stone is a director and dramaturg based in Sheffield. Her work includes; One Small Step, Leeds Piano International, Romeo and Juliet, Leeds Playhouse, Stable (Barnsley Civic/UK tour), The Night Constable (Ramps on the Moon), The Third Murderer (Sheffield Theatres), Showtime! (Sheffield Theatres) Winter Tales of Wonder (Sheffield Theatres), Twisted Heist (Half Moon Theatre).

Sally Proctor is a theatre director and creative practitioner who specialises in community arts and socially engaged projects. Her recent work includes interactive arts projects and large-scale participatory productions with The Bare Project, the National Theatre's Public Acts, RivelinCo and Slung Low. Based at Slung Low for five years she helped launch the inaugural Community Cultural College and Leeds People's Theatre.

Sam Glossop is a Sound Designer and Composer Based in Sheffield. His recent design work includes; Much Ado About Nothing (Sheffield Theatre/UK Tour) Home (Minerva, Chichester Festival Theatre); Flinch (UK Tour), The Legend of Sleepy Hollow (UK Tour); Instructions for a Teenage Armageddon (Southwark Playhouse).

Kevin Jenkins is a designer of set and costumes for theatrical productions based in South Yorkshire. His recent work includes; The Girl Next Door (Stephen Joseph Theatre), Home Girl (Derby Theatre), Bussing Out (Theatre in the Mill, Bradford, A Series of Public Apologies (Sheffield Theatres), Coram Boy (Nottingham Playhouse).

Malika Sykes is a Play Therapist with a background in drama and applied theatre based in Sheffield. She believes in every individual's ability to be creative and nurtures and facilitates this creativity in both her play therapy and drama work. She has facilitated and directed four shows for Sheffield Theatres' Launchpad (a group of adults with learning disabilities and/or autism), as well as countless performances by children and young people in schools, summer schools and drama academies.

Producer, Miranda Debenham works on disability justice in theatre with Ramps on the Moon, and previously Theatre Deli and Sheffield Theatres, working on the large scale productions. She has been involved in arts production and administration for the last ten years, including as an independent producer for emerging artists, as the Executive Director of The Local Theatre, and as Producer/Programmer at Theatre Deli Sheffield.

FIND OUR MORE

Email: Hello@theblanketfortclub.co.uk

Web: www.theblanketfortclub.co.uk/

